

BEE 2 PRELIMINARY 2024 CANDIDATE PAPER

Task 1 (3 points for each correct answer)

Read the text. Find ten misspelled words and circle them. Then write the correct spelling on the numbered lines below. Answers can be in any sequence. There is an example.

In my city, (ther's) a wonderfull museum that I love to visit. It has lots of rooms with varius exhibits, covering the history of the area from millions of years ago up until the recent past. My faivourite part is the dinosar exhibit. It's so intresting to see the enormouse bones and imagine these creatures walking around our planet. The museum also has beautiful potery, and objacts that were used by ordinary people hundreds of years ago. Sometimes, they organize lecturs for kids, where you can learn about different things, like how people lived in ansient times. It's fascinating to explore and learn new facts every time I go. This museum makes history come alive, and that's why I think it's a fantastic place for everyone to visit.

Example: ___ *there's* _____

1) _____

6) _____

2) _____

7) _____

3) _____

8) _____

4) _____

9) _____

5) _____

10) _____

Task 2 (2 points for each correct answer)

Look at the pictures and put the letters in the right order to make the correct spelling of the words.



Example:

SFAO

___sofa___



1. BDAGANE



6. MAEHICNC



2. RFEREE



7. CCROOLDIE



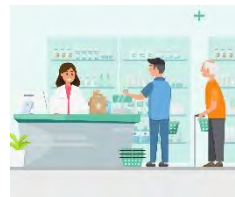
3. COOHCLTAE



8. BRCEEALT



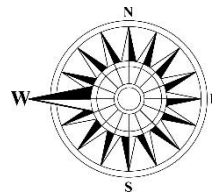
4. CLSROAOSM



9. PRMACHAY



5. JLELIYSFH



10. WTEERSN

Task 3 – LISTENING (2 points for each correct answer)

You will hear a short recording. Read the text on your paper and complete the gaps. You should write one word in each gap. You will hear the recording twice.

These days, people spend too much time _____.

The problem started when the _____ was invented.

People could then enjoy entertainment in the _____ of their homes. Now, we live in a _____ age, the problem is even worse.

Our lives are becoming increasingly _____.

It is convenient. _____, we need to keep things in balance.

_____, about an hour of physical activity every day is recommended.

Personally, I try to walk at least two _____ a day.

That's because being in contact with the _____ world is beneficial. Fresh air helps you cope with stress and relieve _____.

Task 4 - BRAINSTORM (2 points for each correct answer)

Write 5 (five) words that aligned to FURNITURE AND DECOR, start with the first letter given, according to the definition. Each word contains no less than 5 letters.

Definition: Long comfortable piece for sitting on; found in common rooms.

1) C _____

Definition: Surface in the kitchen; used for preparing food and holding small appliances.

2) C _____

Definition: Piece of furniture for holding folded clothing.

3) B _____

Definition: Square opening on a wall to hold a fire and warm up the home; may be electric, gas, or wood

4) F _____

Definition: Long shelf-like surface beneath a window.

5) L _____

This is the end of the paper.